

# iNetGo

## Fully automated Data Modem to receive 2G/3G GNSS Corrections

The iNetGo is a new generation compact data modem that provides GNSS correction data in real time during the availability of GSM or GPRS network. iNetGo is independently of the GNSS-receiver manufacturer and works with several GNSS card providers. To manage the correction data transmission connection, the GNSS receiver's NMEA-sentence GGA is used.

- Wide supply voltage range of 8 to 48 V DC
- 900 MHz / 1'800 MHz frequency band for 2G connection
- 900 MHz frequency band for 3G connection
- Integrated NTRIP - client
- GSM (CSD) or GPRS connection
- Dial-up with the receipt of an NMEA-sentence
- **Roaming supported**

After receipt of the GGA string, iNetGo connects autonomously to the configured reference service and supplies correction data to the serial interface.

iNetGo supports either an IP-based GPRS connection or a circuit switched data call (CSD) via GSM band. With the integrated NTRIP-client, it is possible to receive

correction data from different reference services, as well as from your own reference station. Downloading the NTRIP



source table as well as Selecting an appropriate reference station happens fully automated. For a smooth operation, a GPRS and/or GSM (with unlocked CSD function) SIM card is mandatory. In addition to the serial

interface, iNetGo has an USB port for configuration purposes. The power is obtained via a 6 pole RJ12 jack at a voltage range of 8 to 48V DC. The used antenna requires an SMA connector and has to cover the 900 MHz frequency band for the 2G and 3G connection or the 1'800 MHz frequency band for the 2G connection.

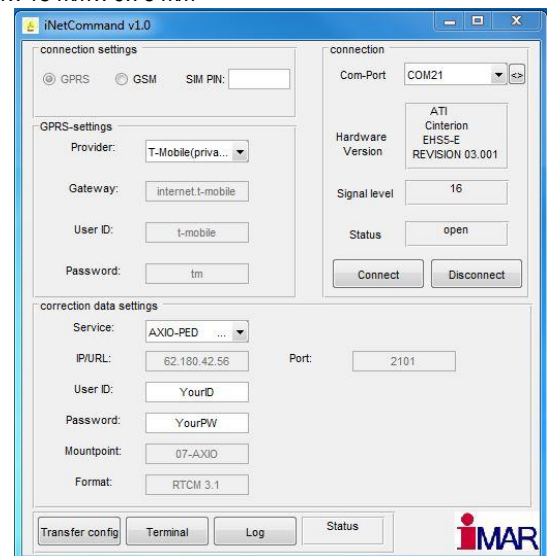
### Technical Data iNetGo:

LED Status Information:	CSD data call in progress Data transfer Registered to network Limited network service	50 ms on / 990 ms off 50 ms on / 1'990 ms off 50 ms on / 3'990 ms off 500 ms on / 500 ms off
RS232 Interface:	115'200 bps, 8 data bits, no parity, 1 stop bit, RTS/CTS (Hardware) flow control	
SIM Card:	Mini SIM (ISO/IEC 7810:2003), size 25 mm x 15 mm x 0.76 mm	
2G Frequency Band:	900 MHz / 1'800 MHz	
3G Frequency Band:	900 MHz	
Interfaces:	<ul style="list-style-type: none"> <li>• Serial interface RS232 (Rx/D/TxD)</li> <li>• SIM card slot</li> <li>• Power supply RJ12 Western jack</li> <li>• Micro USB</li> <li>• SMA antenna connector</li> </ul>	
Power Supply:	8...48 V DC, max. 3,5 W	
Dimensions:	Length: 71,8mm	Width: 40,6mm
	Height: 21,6mm	

The configuration software iNetCommand is included in the scope of supply. With this user guided application it is possible to communicate with the iNetGo as well as to upload connection and correction data settings for configuration purposes. Provided default values for both network provider and reference service quicken the configuration process.

Furthermore, parameters such as hardware version or RF signal level are available at first sight.

Additional functions like an integrated terminal program or a log screen complete the software.



iMAR Navigation GmbH • Im Reihersbruch 3 • D-66386 St. Ingbert / Germany  
Phone: +49-(0)-6894-9657-0 • Fax: +49-(0)-6894-9657-22  
[www.imar-navigation.de](http://www.imar-navigation.de) • [sales@imar-navigation.de](mailto:sales@imar-navigation.de)

